

Transfer Your 3D/CAD into Pico VR Devices



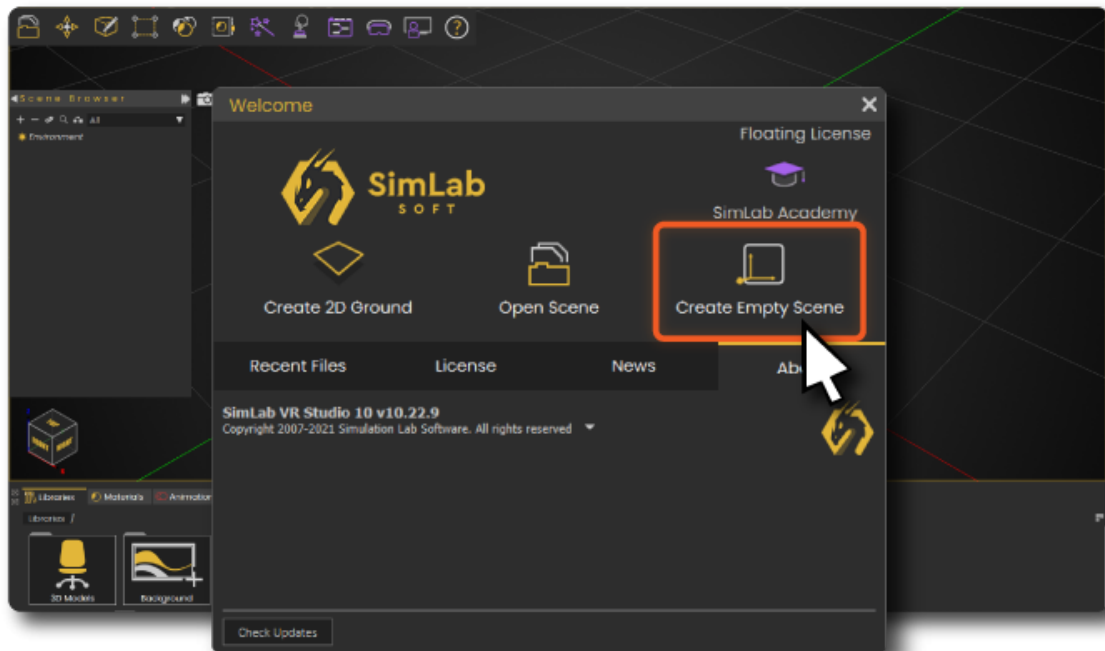
If you have a 3D model, a 3D scene, or a CAD design and want to run it and examine it in VR, you can easily transfer it and run it on Pico VR devices using SimLab Soft technology.

Follow these steps to transfer any 3D file you have into your Pico VR devices:

The 3D model used in this example can be found here. [Download Link](#)

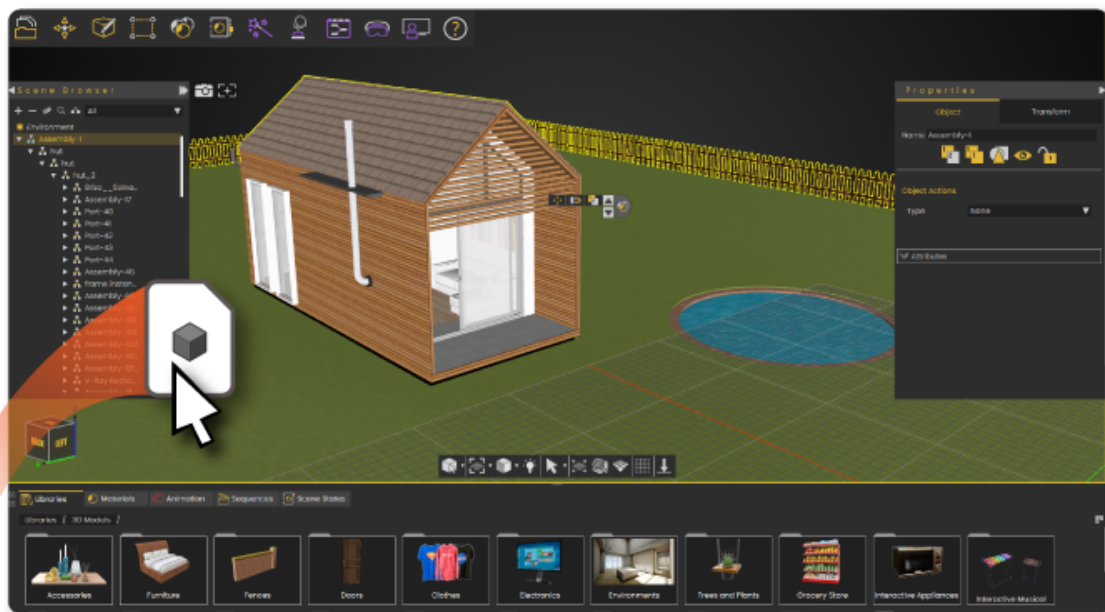
First: Go to your desktop (windows or macOS).

1- Download and Install [SimLab VR Studio](#), then open it.



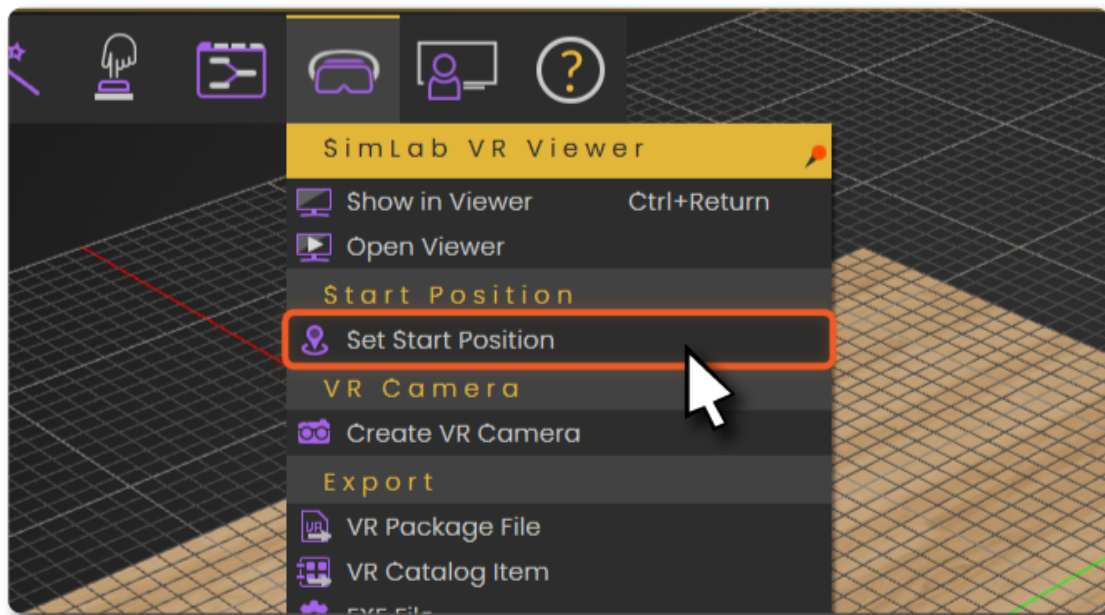
2- Drag and drop your 3D/CAD model(s) into the scene.

You can import pretty much all industry standards 3D/CAD file formats, check the full supported file formats list [here](#).



3- Define the starting position of the VR Experience.

The start position defines the location where the viewer is going to start the experience. you can position it wherever you want.

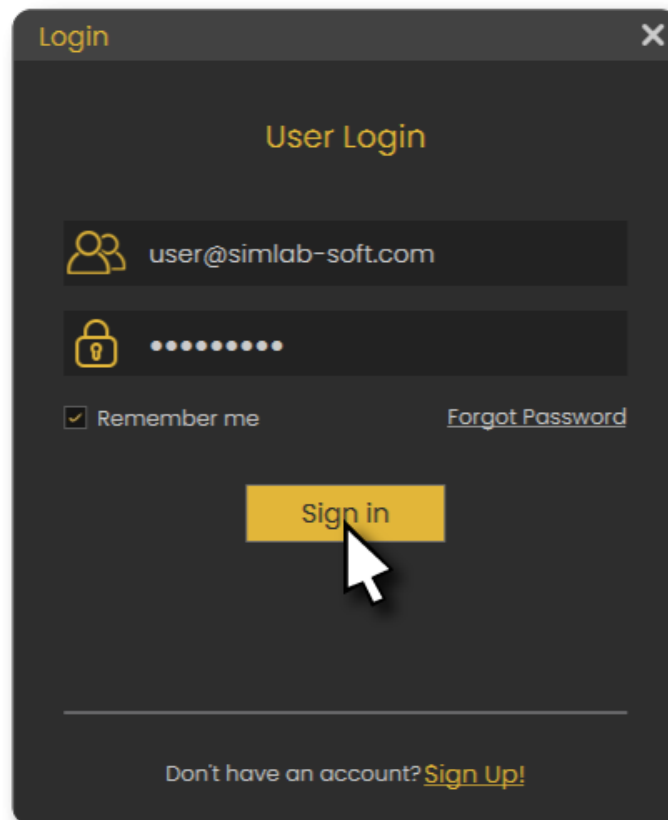


You can test the VR scene before sharing it to the Pico VR device on desktop. Go to **VR Viewer > Show in Viewer > Desktop**.

4- Share the VR Experience to SimLab Cloud, go to **VR Viewer > Show in Viewer > Standalone VR**.

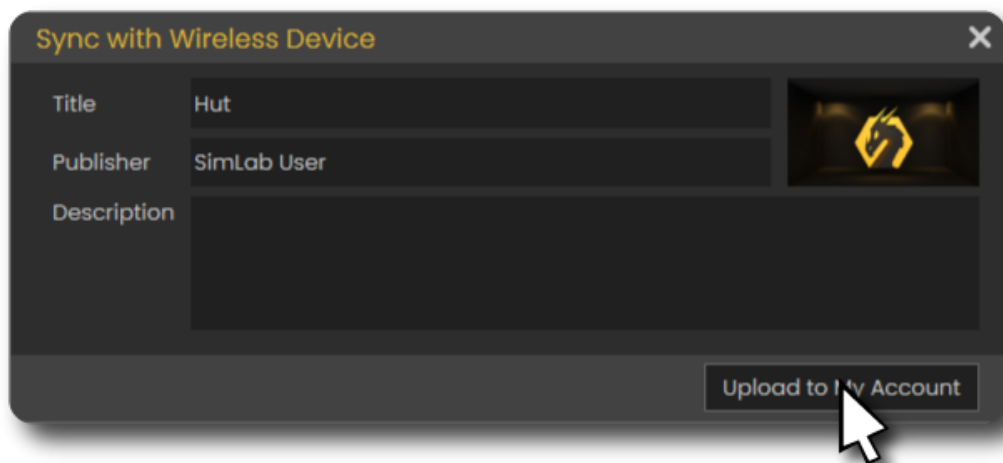


You need to **sign in** to an active SimLab account if you are not already.



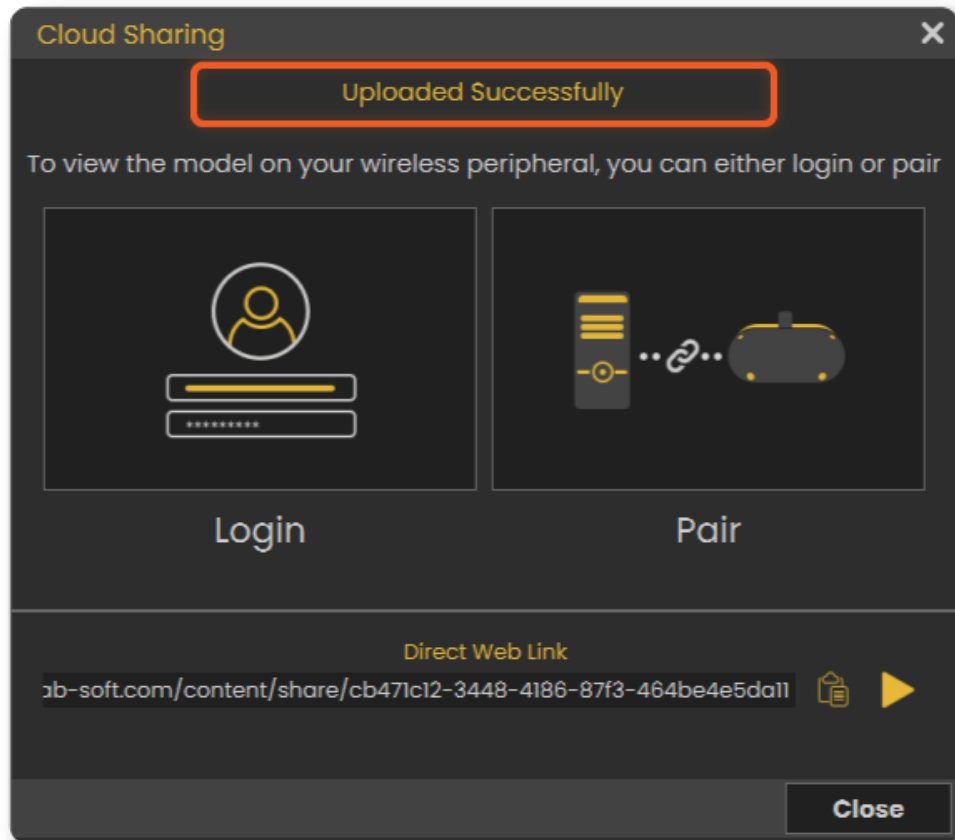
A dark-themed dialog box titled "Login" with a close button (X) in the top right corner. The main heading is "User Login". Below the heading, there are two input fields: the first contains the email "user@simlab-soft.com" and the second contains a password represented by ten dots. Below the password field, there is a checked checkbox labeled "Remember me" and a link labeled "Forgot Password". A yellow "Sign in" button is centered below these fields, with a mouse cursor pointing at it. At the bottom of the dialog, there is a link that says "Don't have an account? [Sign Up!](#)".

Fill out the information then click on **Upload to My Account**.



A dark-themed dialog box titled "Sync with Wireless Device" with a close button (X) in the top right corner. It features a form with three fields: "Title" with the value "Hut", "Publisher" with the value "SimLab User", and "Description" which is currently empty. To the right of the "Title" and "Publisher" fields is a small image of a SimLab logo. At the bottom right of the dialog, there is a button labeled "Upload to My Account" with a mouse cursor pointing at it.

It will take few moments then it should say that its **Uploaded Successfully**.

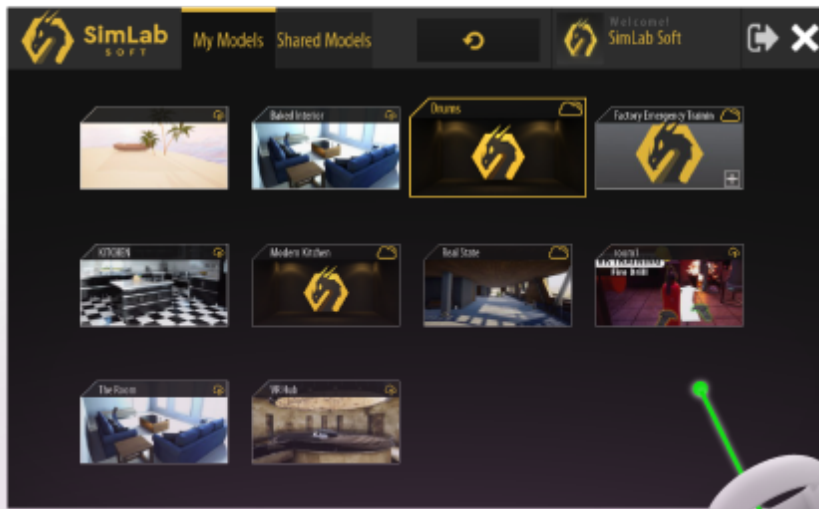


You can learn how to enhance the quality by enabling shadows on the Pico VR device [here](#).

Second: Go to your Pico VR device.

Now the VR scene is uploaded and synced to your SimLab account, open Pico device, login to the account to access the VR experience.

- 1- Download** [SimLab VR Viewer for Pico VR Devices](#).
- 2-** Open the app, then **sign in** to your SimLab account.
- 3-** You will find the VR Experience under **My Models** tab.



Revision #6

Created 16 February 2022 07:11:34

Updated 13 March 2025 11:27:19