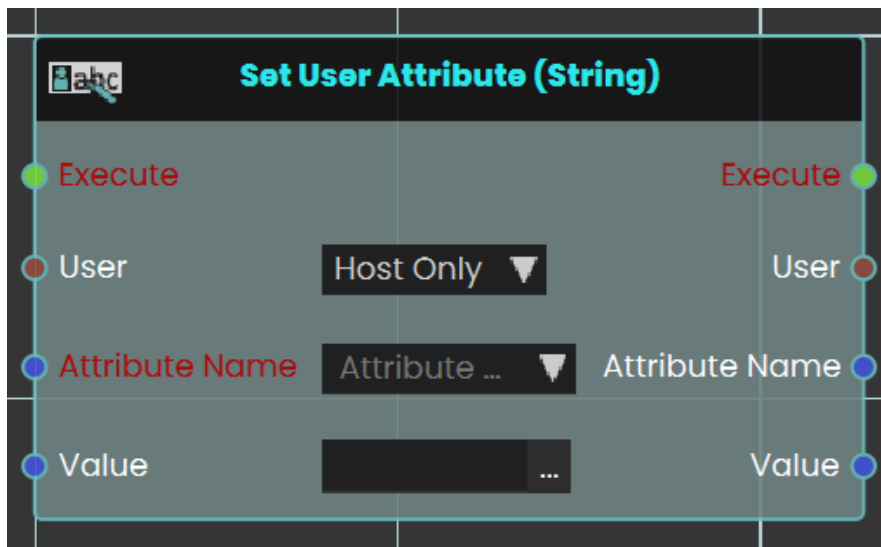


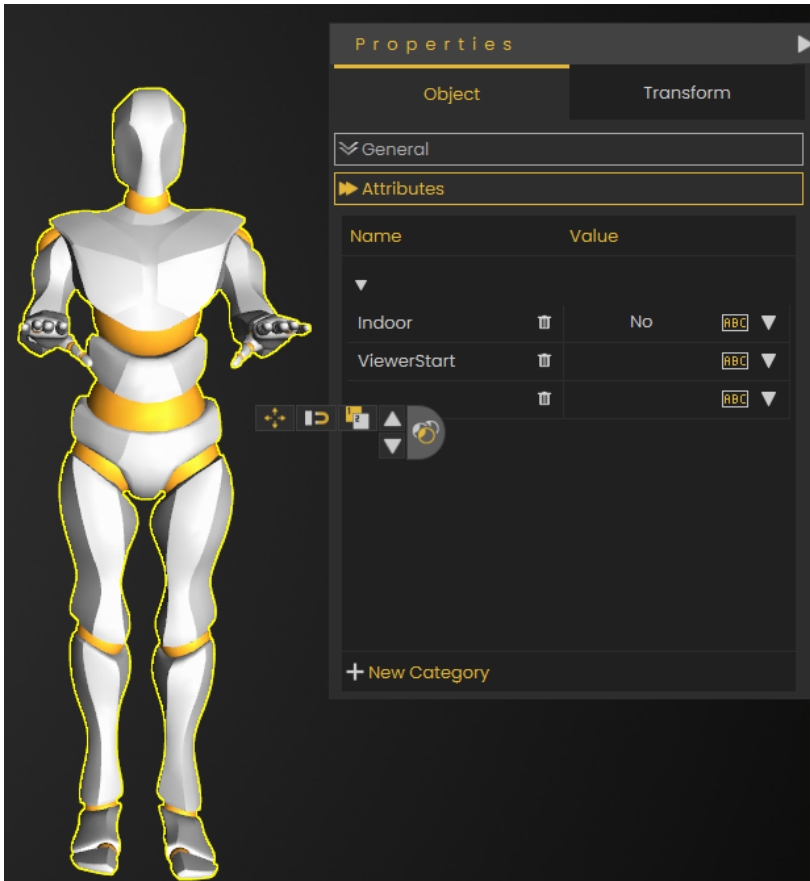
User \ Attributes \ String

Set User Attribute (String)

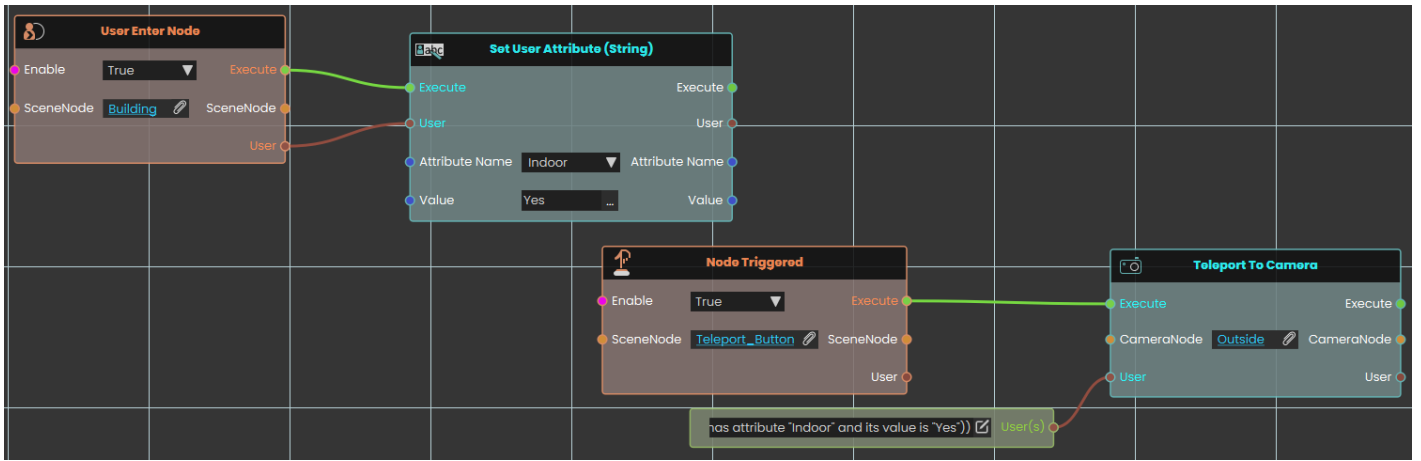


The **Set User Attribute** response enables user to set a value to an attribute by either typing in a string value in the value field or by attaching a value or a variable node to that port. Then once the response is executed, the variable value can be acquired through the **Value** port.

Example



In this example, we added a **String User Attribute** called it **Indoor** with the value **No**



Once the user enters the object named Building, the **Indoor** attribute's value will be set to **Yes**, then when the object named Teleport Button is triggered, the user(s) with the attribute named **Indoor** and the value **Yes** will be teleported to the **Outside** CameraNode location.

Revision #16

Created 28 August 2024 13:52:16

Updated 1 April 2026 07:30:43