

User \ Attributes

Every user in your experience can carry extra pieces of information called **attributes** — small named values you attach to a user and read back later. Attributes can also be grouped into named **categories**, which lets one user keep separate attributes that share a name. The nodes on this page let you add, read, check for, and remove attributes on a user, both on their own and inside a category.

Reading an attribute never changes it; setting or removing one changes only that single attribute and leaves everything else about the user untouched.

Get a user attribute

Get User Attribute (Number)

Reads a named attribute from a user and gives it back as a number.

What it does

Every user in your session can carry extra pieces of information called **attributes**, each one saved under a name you choose. This node looks for the attribute called the name you provide on the user you connect and hands its value back as a number. It only reads the user — it does not change the user or the attribute in any way.

The attribute should already exist and hold a number. If it is missing, or what is stored cannot be read as a number, the node stops with an error instead of giving you a result — so check with **User Has Attribute** first if you are not sure.

Inputs

Port	Type	What to connect
Execute	Trigger	Wire this from the previous node's Execute output.

Port	Type	What to connect
User	User	The user you want to read the attribute from. If you leave this port unconnected, you can pick an option on the node itself: Host Only (the default) or All Users .
Attribute Name	Text	The name of the attribute you want to read.

Outputs

Port	Type	What you get
Execute	Trigger	Fires once the node has finished.
User	User	The same user you connected, passed straight through so you can keep using it.
Attribute Name	Text	The attribute name you provided, passed through.
Value	Number	The number stored in the attribute.

Example

User input	the <input type="text" value="Trainee01"/> user
Attribute Name input	<input type="text" value="score"/>
Value output	<input type="text" value="85"/>

Get User Attribute (Boolean)

Reads a named attribute from a user and gives it back as a true / false value.

What it does

Every user in your session can carry extra pieces of information called **attributes**, each one saved under a name you choose. This node looks for the attribute called the name you provide on the user you connect and hands its value back as a true / false value. It only reads the user — it does not change the user or the attribute in any way.

The attribute should already exist and hold a true / false value. If it is missing, or what is stored cannot be read as a true / false value, the node stops with an error instead of giving you a result — so check with **User Has Attribute** first if you are not sure.

Saved values of , or are read as true, and , or are read as false.

Inputs

Port	Type	What to connect
Execute	Trigger	Wire this from the previous node's Execute output.
User	User	The user you want to read the attribute from. If you leave this port unconnected, you can pick an option on the node itself: Host Only (the default) or All Users .
Attribute Name	Text	The name of the attribute you want to read.

Outputs

Port	Type	What you get
Execute	Trigger	Fires once the node has finished.
User	User	The same user you connected, passed straight through so you can keep using it.
Attribute Name	Text	The attribute name you provided, passed through.
Result	True / false	The true / false value stored in the attribute.

Example

User input	the <input type="text" value="Trainee01"/> user
Attribute Name input	<input type="text" value="certified"/>
Result output	<input type="text" value="true"/>

Get User Attribute (SceneNode)

Reads a named attribute from a user and gives it back as a scene node.

What it does

Every user in your session can carry extra pieces of information called **attributes**, each one saved under a name you choose. This node looks for the attribute called the name you provide on the user you connect and hands its value back as a scene node. It only reads the user — it does not change the user or the attribute in any way.

The attribute should already exist and hold a scene node. If it is missing, you get an empty result rather than an error, so it is still worth checking with **User Has Attribute** first.

Inputs

Port	Type	What to connect
Execute	Trigger	Wire this from the previous node's Execute output.
User	User	The user you want to read the attribute from.
Attribute Name	Text	The name of the attribute you want to read.

Outputs

Port	Type	What you get
Execute	Trigger	Fires once the node has finished.
User	User	The same user you connected, passed straight through so you can keep using it.
Attribute Name	Text	The attribute name you provided, passed through.
Result	Scene node	The scene node stored in the attribute.

Example

User input	the <code><Trainee01></code> user
Attribute Name input	<code>assignedStation</code>
Result output	<code><WeldingStation></code>

Get User Attribute (SceneState)

Reads a named attribute from a user and gives it back as a scene state.

What it does

Every user in your session can carry extra pieces of information called **attributes**, each one saved under a name you choose. This node looks for the attribute called the name you provide on the user you connect and hands its value back as a scene state. It only reads the user — it does not change the user or the attribute in any way.

The attribute should already exist and hold a scene state. If it is missing, you get an empty result rather than an error, so it is still worth checking with **User Has Attribute** first.

Inputs

Port	Type	What to connect
Execute	Trigger	Wire this from the previous node's Execute output.
User	User	The user you want to read the attribute from.
Attribute Name	Text	The name of the attribute you want to read.

Outputs

Port	Type	What you get
Execute	Trigger	Fires once the node has finished.
User	User	The same user you connected, passed straight through so you can keep using it.
Attribute Name	Text	The attribute name you provided, passed through.

Port	Type	What you get
Result	Scene state	The scene state stored in the attribute.

Example

User input	the <input type="text" value="Traine01"/> user
Attribute Name input	<input type="text" value="checkpoint"/>
Result output	<input type="text" value="Checkpoint2"/>

Get User Attribute (Sequence)

Reads a named attribute from a user and gives it back as a sequence.

What it does

Every user in your session can carry extra pieces of information called **attributes**, each one saved under a name you choose. This node looks for the attribute called the name you provide on the user you connect and hands its value back as a sequence. It only reads the user — it does not change the user or the attribute in any way.

The attribute should already exist and hold a sequence. If it is missing, you get an empty result rather than an error, so it is still worth checking with **User Has Attribute** first.

Inputs

Port	Type	What to connect
Execute	Trigger	Wire this from the previous node's Execute output.
User	User	The user you want to read the attribute from.
Attribute Name	Text	The name of the attribute you want to read.

Outputs

Port	Type	What you get
------	------	--------------

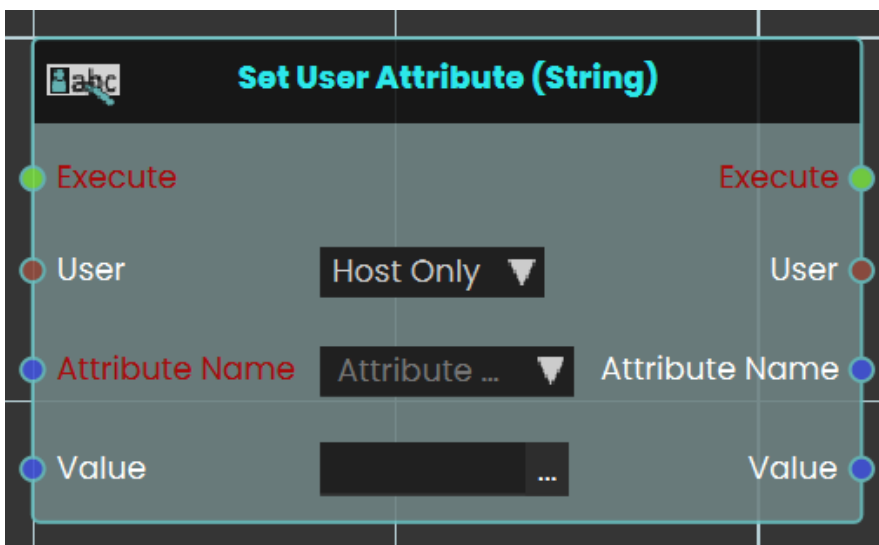
Execute	Trigger	Fires once the node has finished.
User	User	The same user you connected, passed straight through so you can keep using it.
Attribute Name	Text	The attribute name you provided, passed through.
Result	Sequence	The sequence stored in the attribute.

Example

User input	the <Trainee01> user
Attribute Name input	introSequence
Result output	<SafetyBriefing>

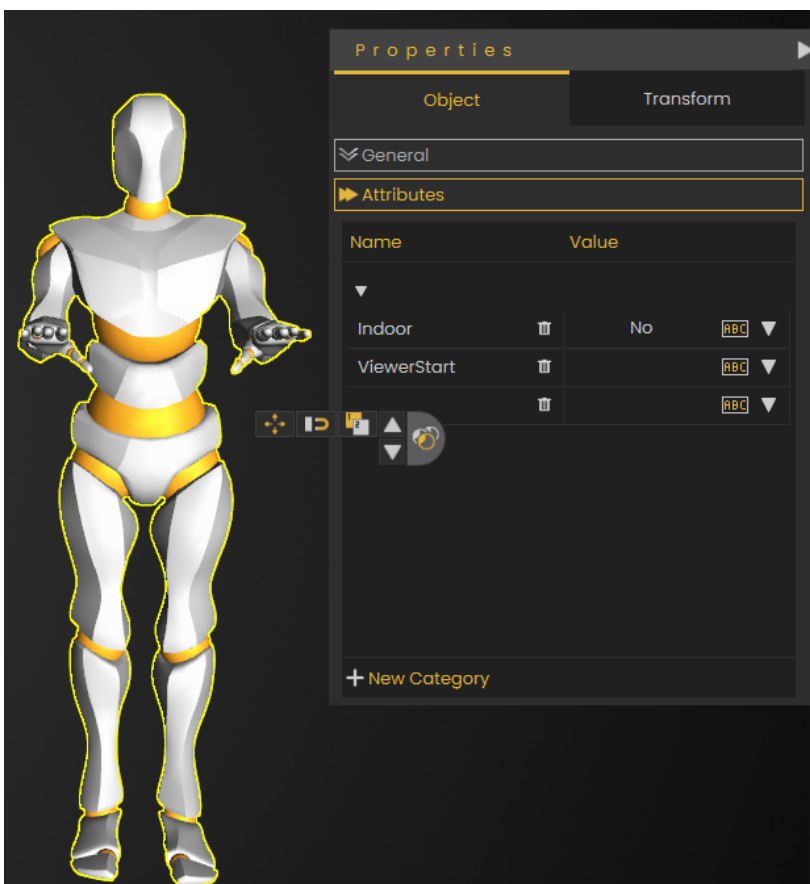
Set a user attribute

Set User Attribute (String)

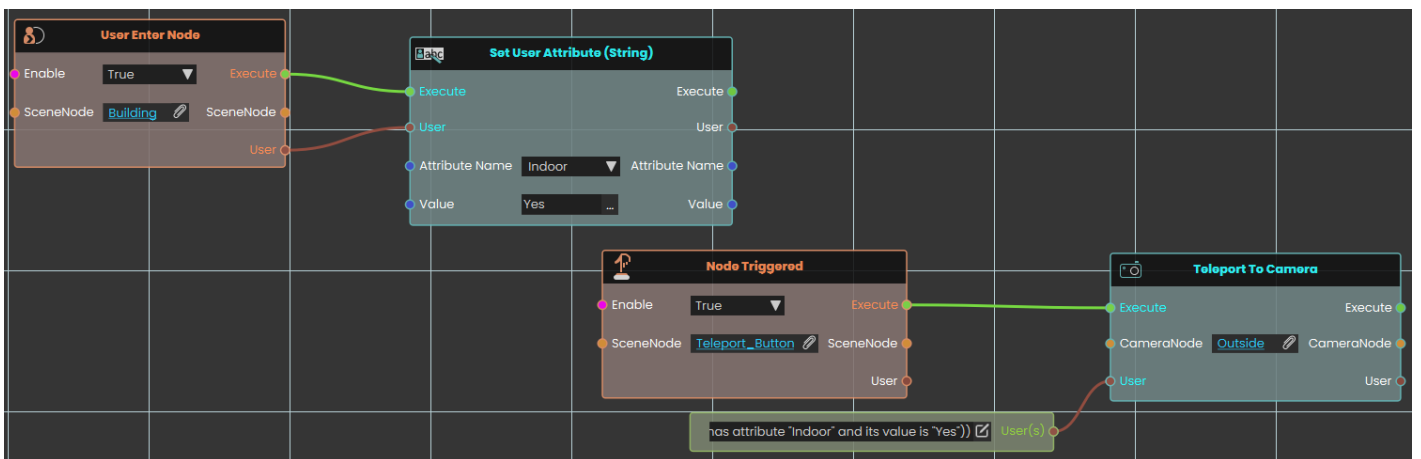


The **Set User Attribute** response enables user to set a value to an attribute by either typing in a string value in the value field or by attaching a value or a variable node to that port. Then once the response is executed, the variable value can be acquired through the **Value** port.

Example



In this example, we added a **String User Attribute** called it **Indoor** with the value **No**



Once the user enters the object named Building, the **Indoor** attribute's value will be set to **Yes**, then when the object named Teleport Button is triggered, the user(s) with the attribute named **Indoor** and the value **Yes** will be teleported to the **Outside** CameraNode location.

Set User Attribute (Number)

Saves a number onto a user as a named attribute.

What it does

Every user in your session can carry extra pieces of information called **attributes**, each one saved under a name you choose. This node attaches the attribute called the name you provide to the user you connect and stores a number in it. If the user already has an attribute with that name, its value is replaced; if not, the attribute is created.

The value you provide is also sent straight back out, so you can keep using it further along.

Inputs

Port	Type	What to connect
Execute	Trigger	Wire this from the previous node's Execute output.
User	User	The user you want to add or change the attribute on. If you leave this port unconnected, you can pick an option on the node itself — Host Only (the default) or All Users , which saves the attribute on every user in the session.
Attribute Name	Text	The name to save the attribute under.
Value	Number	The number to store.

Outputs

Port	Type	What you get
Execute	Trigger	Fires once the node has finished.
User	User	The same user you connected, passed straight through so you can keep using it.
Attribute Name	Text	The attribute name you provided, passed through.
Value	Number	The same value you stored, passed through.

Example

User input	the <code><Trainee01></code> user
-------------------	-----------------------------------------

Attribute Name input	score
Value input	85

Set User Attribute (Boolean)

Saves a true / false value onto a user as a named attribute.

What it does

Every user in your session can carry extra pieces of information called **attributes**, each one saved under a name you choose. This node attaches the attribute called the name you provide to the user you choose and stores a true / false value in it. If the user already has an attribute with that name, its value is replaced; if not, the attribute is created.

The value you provide is also sent straight back out, so you can keep using it further along.

Inputs

Port	Type	What to connect
Execute	Trigger	Wire this from the previous node's Execute output.
User	User	The user you want to add or change the attribute on. If you leave this port unconnected, you can pick an option on the node itself — Host Only (the default) or All Users , which saves the attribute on every user in the session.
Attribute Name	Text	The name to save the attribute under.
Value	True / false	The true / false value to store.

Outputs

Port	Type	What you get
Execute	Trigger	Fires once the node has finished.

Port	Type	What you get
User	User	The same user you connected, passed straight through so you can keep using it.
Attribute Name	Text	The attribute name you provided, passed through.
Value	True / false	The same value you stored, passed through.

Example

User input	the <input type="text" value="<Trainee01>"/> user
Attribute Name input	<input type="text" value="certified"/>
Value input	<input type="text" value="true"/>

Set User Attribute (SceneNode)

Saves a scene node onto a user as a named attribute.

What it does

Every user in your session can carry extra pieces of information called **attributes**, each one saved under a name you choose. This node attaches the attribute called the name you provide to the user you connect and stores a scene node in it. If the user already has an attribute with that name, its value is replaced; if not, the attribute is created.

The value you provide is also sent straight back out, so you can keep using it further along.

Inputs

Port	Type	What to connect
Execute	Trigger	Wire this from the previous node's Execute output.
User	User	The user you want to add or change the attribute on.
Attribute Name	Text	The name to save the attribute under.

Port	Type	What to connect
Value	Scene node	The scene node to save a link to.

Outputs

Port	Type	What you get
Execute	Trigger	Fires once the node has finished.
User	User	The same user you connected, passed straight through so you can keep using it.
Attribute Name	Text	The attribute name you provided, passed through.
Value	Scene node	The same value you stored, passed through.

Example

User input	the <input type="text" value="<Trainee01>"/> user
Attribute Name input	<input type="text" value="assignedStation"/>
Value input	the <input type="text" value="<WeldingStation>"/> object

Set User Attribute (SceneState)

Saves a scene state onto a user as a named attribute.

What it does

Every user in your session can carry extra pieces of information called **attributes**, each one saved under a name you choose. This node attaches the attribute called the name you provide to the user you connect and stores a scene state in it. If the user already has an attribute with that name, its value is replaced; if not, the attribute is created.

The value you provide is also sent straight back out, so you can keep using it further along.

Inputs

Port	Type	What to connect
Execute	Trigger	Wire this from the previous node's Execute output.
User	User	The user you want to add or change the attribute on.
Attribute Name	Text	The name to save the attribute under.
Value	Scene state	The scene state to save a link to.

Outputs

Port	Type	What you get
Execute	Trigger	Fires once the node has finished.
User	User	The same user you connected, passed straight through so you can keep using it.
Attribute Name	Text	The attribute name you provided, passed through.
Value	Scene state	The same value you stored, passed through.

Example

User input	the <input type="text" value="<Trainee01>"/> user
Attribute Name input	<input type="text" value="checkpoint"/>
Value input	<input type="text" value="<Checkpoint2>"/>

Set User Attribute (Sequence)

Saves a sequence onto a user as a named attribute.

What it does

Every user in your session can carry extra pieces of information called **attributes**, each one saved under a name you choose. This node attaches the attribute called the name you provide to the user you connect and stores a sequence in it. If the user already has an attribute with that name, its value is replaced; if not, the attribute is created.

The value you provide is also sent straight back out, so you can keep using it further along.

Inputs

Port	Type	What to connect
Execute	Trigger	Wire this from the previous node's Execute output.
User	User	The user you want to add or change the attribute on.
Attribute Name	Text	The name to save the attribute under.
Value	Sequence	The sequence to save a link to.

Outputs

Port	Type	What you get
Execute	Trigger	Fires once the node has finished.
User	User	The same user you connected, passed straight through so you can keep using it.
Attribute Name	Text	The attribute name you provided, passed through.
Value	Sequence	The same value you stored, passed through.

Example

User input	the <Trainee01> user
Attribute Name input	introSequence
Value input	<SafetyBriefing>

Check or remove a user attribute

User Has Attribute

Checks whether a user has an attribute with a given name.

What it does

This node looks at the user you connect and tells you whether they already have an attribute saved under the name you provide. You get back **true** if they do and **false** if they do not. It only checks — nothing on the user is changed.

It is handy to run before reading or changing an attribute, to be sure it is there.

Inputs

Port	Type	What to connect
Execute	Trigger	Wire this from the previous node's Execute output.
User	User	The user you want to check.
Attribute Name	Text	The name of the attribute to look for.

Outputs

Port	Type	What you get
Execute	Trigger	Fires once the node has finished.
User	User	The same user you connected, passed straight through so you can keep using it.
Attribute Name	Text	The attribute name you provided, passed through.
Result	True / false	True if the attribute exists, otherwise false .

Example

User input	the <input type="text" value="Trainee01"/> user
Attribute Name input	<input type="text" value="certified"/>

Result output	true — the attribute exists
----------------------	------------------------------------

Remove User Attribute

Deletes a named attribute from a user.

What it does

This node removes the attribute saved under the name you provide from the user you connect. That one attribute and its value are deleted from the user; everything else about the user stays the same.

If the user has no attribute with that name, nothing happens.

Inputs

Port	Type	What to connect
Execute	Trigger	Wire this from the previous node's Execute output.
User	User	The user you want to remove the attribute from.
Attribute Name	Text	The name of the attribute to remove.

Outputs

Port	Type	What you get
Execute	Trigger	Fires once the node has finished.
User	User	The same user you connected, passed straight through so you can keep using it.
Attribute Name	Text	The attribute name you provided, passed through.

Example

User input	the <code><Trainee01></code> user
-------------------	-----------------------------------------

Attribute Name input

tempNote

Get a user attribute in a category

Get User Attribute in Category (String)

Reads a named attribute kept in a category on a user and gives it back as a piece of text.

What it does

Every user in your session can carry extra pieces of information called **attributes**, each one saved under a name you choose. Attributes can also be grouped into named **categories**, so a single user can keep separate attributes that share a name in different categories. This node looks for the attribute called the name you provide inside the category you name, on the user you connect and hands its value back as a piece of text. It only reads the user — it does not change the user or the attribute in any way.

The attribute should already exist and hold text. If it is missing, you get an empty result rather than an error, so it is still worth checking with **User Has Attribute In Category** first.

Inputs

Port	Type	What to connect
Execute	Trigger	Wire this from the previous node's Execute output.
User	User	The user you want to read the attribute from.
Attribute Name	Text	The name of the attribute you want to read.
Category	Text	The name of the category the attribute is kept in.

Outputs

Port	Type	What you get
Execute	Trigger	Fires once the node has finished.
User	User	The same user you connected, passed straight through so you can keep using it.
Attribute Name	Text	The attribute name you provided, passed through.
Category	Text	The category name you provided, passed through.
Result	Text	The text stored in the attribute.

Example

User input	the <input type="text" value="Trainee01"/> user
Attribute Name input	<input type="text" value="role"/>
Category input	<input type="text" value="Training"/>
Result output	<input type="text" value="Safety Officer"/>

Get User Attribute in Category (Number)

Reads a named attribute kept in a category on a user and gives it back as a number.

What it does

Every user in your session can carry extra pieces of information called **attributes**, each one saved under a name you choose. Attributes can also be grouped into named **categories**, so a single user can keep separate attributes that share a name in different categories. This node looks for the attribute called the name you provide inside the category you name, on the user you connect and hands its value back as a number. It only reads the user — it does not change the user or the attribute in any way.

The attribute should already exist and hold a number. If it is missing, or what is stored cannot be read as a number, the node stops with an error instead of giving you a result — so check with **User Has Attribute In Category** first if you are not sure.

Inputs

Port	Type	What to connect
Execute	Trigger	Wire this from the previous node's Execute output.
User	User	The user you want to read the attribute from.
Attribute Name	Text	The name of the attribute you want to read.
Category	Text	The name of the category the attribute is kept in.

Outputs

Port	Type	What you get
Execute	Trigger	Fires once the node has finished.
User	User	The same user you connected, passed straight through so you can keep using it.
Attribute Name	Text	The attribute name you provided, passed through.
Category	Text	The category name you provided, passed through.
Result	Number	The number stored in the attribute.

Example

User input	the <input type="text" value="Trainee01"/> user
Attribute Name input	<input type="text" value="score"/>
Category input	<input type="text" value="Training"/>
Result output	<input type="text" value="85"/>

Get User Attribute in Category (Boolean)

Reads a named attribute kept in a category on a user and gives it back as a true / false value.

What it does

Every user in your session can carry extra pieces of information called **attributes**, each one saved under a name you choose. Attributes can also be grouped into named **categories**, so a single user can keep separate attributes that share a name in different categories. This node looks for the attribute called the name you provide inside the category you name, on the user you connect and hands its value back as a true / false value. It only reads the user — it does not change the user or the attribute in any way.

The attribute should already exist and hold a true / false value. If it is missing, or what is stored cannot be read as a true / false value, the node stops with an error instead of giving you a result — so check with **User Has Attribute In Category** first if you are not sure.

Saved values of `true`, `yes` or `on` are read as true, and `false`, `no` or `off` are read as false.

Inputs

Port	Type	What to connect
Execute	Trigger	Wire this from the previous node's Execute output.
User	User	The user you want to read the attribute from.
Attribute Name	Text	The name of the attribute you want to read.
Category	Text	The name of the category the attribute is kept in.

Outputs

Port	Type	What you get
Execute	Trigger	Fires once the node has finished.
User	User	The same user you connected, passed straight through so you can keep using it.

Port	Type	What you get
Attribute Name	Text	The attribute name you provided, passed through.
Category	Text	The category name you provided, passed through.
Result	True / false	The true / false value stored in the attribute.

Example

User input	the <input type="text" value="Trainee01"/> user
Attribute Name input	<input type="text" value="certified"/>
Category input	<input type="text" value="Training"/>
Result output	<input type="text" value="true"/>

Get User Attribute in Category (SceneNode)

Reads a named attribute kept in a category on a user and gives it back as a scene node.

What it does

Every user in your session can carry extra pieces of information called **attributes**, each one saved under a name you choose. Attributes can also be grouped into named **categories**, so a single user can keep separate attributes that share a name in different categories. This node looks for the attribute called the name you provide inside the category you name, on the user you connect and hands its value back as a scene node. It only reads the user — it does not change the user or the attribute in any way.

The attribute should already exist and hold a scene node. If it is missing, you get an empty result rather than an error, so it is still worth checking with **User Has Attribute In Category** first.

Inputs

Port	Type	What to connect
------	------	-----------------

Execute	Trigger	Wire this from the previous node's Execute output.
User	User	The user you want to read the attribute from.
Attribute Name	Text	The name of the attribute you want to read.
Category	Text	The name of the category the attribute is kept in.

Outputs

Port	Type	What you get
Execute	Trigger	Fires once the node has finished.
User	User	The same user you connected, passed straight through so you can keep using it.
Attribute Name	Text	The attribute name you provided, passed through.
Category	Text	The category name you provided, passed through.
Result	Scene node	The scene node stored in the attribute.

Example

User input	the <code><Trainee01></code> user
Attribute Name input	<code>assignedStation</code>
Category input	<code>Training</code>
Result output	the <code><WeldingStation></code> object

Get User Attribute in Category (SceneState)

Reads a named attribute kept in a category on a user and gives it back as a scene state.

What it does

Every user in your session can carry extra pieces of information called **attributes**, each one saved under a name you choose. Attributes can also be grouped into named **categories**, so a single user can keep separate attributes that share a name in different categories. This node looks for the attribute called the name you provide inside the category you name, on the user you connect and hands its value back as a scene state. It only reads the user — it does not change the user or the attribute in any way.

The attribute should already exist and hold a scene state. If it is missing, you get an empty result rather than an error, so it is still worth checking with **User Has Attribute In Category** first.

Inputs

Port	Type	What to connect
Execute	Trigger	Wire this from the previous node's Execute output.
User	User	The user you want to read the attribute from.
Attribute Name	Text	The name of the attribute you want to read.
Category	Text	The name of the category the attribute is kept in.

Outputs

Port	Type	What you get
Execute	Trigger	Fires once the node has finished.
User	User	The same user you connected, passed straight through so you can keep using it.
Attribute Name	Text	The attribute name you provided, passed through.
Category	Text	The category name you provided, passed through.
Result	Scene state	The scene state stored in the attribute.

Example

User input	the <code><Trainee01></code> user
Attribute Name input	<code>checkpoint</code>
Category input	<code>Training</code>
Result output	<code><Checkpoint2></code>

Get User Attribute in Category (Sequence)

Reads a named attribute kept in a category on a user and gives it back as a sequence.

What it does

Every user in your session can carry extra pieces of information called **attributes**, each one saved under a name you choose. Attributes can also be grouped into named **categories**, so a single user can keep separate attributes that share a name in different categories. This node looks for the attribute called the name you provide inside the category you name, on the user you connect and hands its value back as a sequence. It only reads the user — it does not change the user or the attribute in any way.

The attribute should already exist and hold a sequence. If it is missing, you get an empty result rather than an error, so it is still worth checking with **User Has Attribute In Category** first.

Inputs

Port	Type	What to connect
Execute	Trigger	Wire this from the previous node's Execute output.
User	User	The user you want to read the attribute from.
Attribute Name	Text	The name of the attribute you want to read.
Category	Text	The name of the category the attribute is kept in.

Outputs

Port	Type	What you get
Execute	Trigger	Fires once the node has finished.
User	User	The same user you connected, passed straight through so you can keep using it.
Attribute Name	Text	The attribute name you provided, passed through.
Category	Text	The category name you provided, passed through.
Result	Sequence	The sequence stored in the attribute.

Example

User input	the <input type="text" value="Trainee01"/> user
Attribute Name input	<input type="text" value="introSequence"/>
Category input	<input type="text" value="Training"/>
Result output	<input type="text" value="<SafetyBriefing>"/>

Set a user attribute in a category

Set User Attribute in Category (String)

Saves a piece of text into a category on a user as a named attribute.

What it does

Every user in your session can carry extra pieces of information called **attributes**, each one saved under a name you choose. Attributes can also be grouped into named **categories**, so a single user can keep separate attributes that share a name in different categories. This node attaches the attribute called the name you provide, inside the category you name, to the user you connect and stores a piece of text in it. If that

category already has an attribute with that name, its value is replaced; if not, the attribute is created.

The value you provide is also sent straight back out, so you can keep using it further along.

Inputs

Port	Type	What to connect
Execute	Trigger	Wire this from the previous node's Execute output.
User	User	The user you want to add or change the attribute on.
Attribute Name	Text	The name to save the attribute under.
Category	Text	The name of the category to keep the attribute in.
Value	Text	The text to store.

Outputs

Port	Type	What you get
Execute	Trigger	Fires once the node has finished.
User	User	The same user you connected, passed straight through so you can keep using it.
Attribute Name	Text	The attribute name you provided, passed through.
Category	Text	The category name you provided, passed through.
Value	Text	The same value you stored, passed through.

Example

User input	the <input type="text" value="Trainee01"/> user
Attribute Name input	<input type="text" value="role"/>
Category input	<input type="text" value="Training"/>

Value input

Safety Officer

Set User Attribute in Category (Number)

Saves a number into a category on a user as a named attribute.

What it does

Every user in your session can carry extra pieces of information called **attributes**, each one saved under a name you choose. Attributes can also be grouped into named **categories**, so a single user can keep separate attributes that share a name in different categories. This node attaches the attribute called the name you provide, inside the category you name, to the user you connect and stores a number in it. If that category already has an attribute with that name, its value is replaced; if not, the attribute is created.

The value you provide is also sent straight back out, so you can keep using it further along.

Inputs

Port	Type	What to connect
Execute	Trigger	Wire this from the previous node's Execute output.
User	User	The user you want to add or change the attribute on.
Attribute Name	Text	The name to save the attribute under.
Category	Text	The name of the category to keep the attribute in.
Value	Number	The number to store.

Outputs

Port	Type	What you get
Execute	Trigger	Fires once the node has finished.

Port	Type	What you get
User	User	The same user you connected, passed straight through so you can keep using it.
Attribute Name	Text	The attribute name you provided, passed through.
Category	Text	The category name you provided, passed through.
Value	Number	The same value you stored, passed through.

Example

User input	the <input type="text" value="Trainee01"/> user
Attribute Name input	<input type="text" value="score"/>
Category input	<input type="text" value="Training"/>
Value input	<input type="text" value="85"/>

Set User Attribute in Category (Boolean)

Saves a true / false value into a category on a user as a named attribute.

What it does

Every user in your session can carry extra pieces of information called **attributes**, each one saved under a name you choose. Attributes can also be grouped into named **categories**, so a single user can keep separate attributes that share a name in different categories. This node attaches the attribute called the name you provide, inside the category you name, to the user you connect and stores a true / false value in it. If that category already has an attribute with that name, its value is replaced; if not, the attribute is created.

The value you provide is also sent straight back out, so you can keep using it further along.

Inputs

Port	Type	What to connect
Execute	Trigger	Wire this from the previous node's Execute output.
User	User	The user you want to add or change the attribute on.
Attribute Name	Text	The name to save the attribute under.
Category	Text	The name of the category to keep the attribute in.
Value	True / false	The true / false value to store.

Outputs

Port	Type	What you get
Execute	Trigger	Fires once the node has finished.
User	User	The same user you connected, passed straight through so you can keep using it.
Attribute Name	Text	The attribute name you provided, passed through.
Category	Text	The category name you provided, passed through.
Value	True / false	The same value you stored, passed through.

Example

User input	the <input type="text" value="Trainee01"/> user
Attribute Name input	<input type="text" value="certified"/>
Category input	<input type="text" value="Training"/>
Value input	<input type="text" value="true"/>

Set User Attribute in Category (SceneNode)

Saves a scene node into a category on a user as a named attribute.

What it does

Every user in your session can carry extra pieces of information called **attributes**, each one saved under a name you choose. Attributes can also be grouped into named **categories**, so a single user can keep separate attributes that share a name in different categories. This node attaches the attribute called the name you provide, inside the category you name, to the user you connect and stores a scene node in it. If that category already has an attribute with that name, its value is replaced; if not, the attribute is created.

The value you provide is also sent straight back out, so you can keep using it further along.

Inputs

Port	Type	What to connect
Execute	Trigger	Wire this from the previous node's Execute output.
User	User	The user you want to add or change the attribute on.
Attribute Name	Text	The name to save the attribute under.
Category	Text	The name of the category to keep the attribute in.
Value	Scene node	The scene node to save a link to.

Outputs

Port	Type	What you get
Execute	Trigger	Fires once the node has finished.
User	User	The same user you connected, passed straight through so you can keep using it.
Attribute Name	Text	The attribute name you provided, passed through.
Category	Text	The category name you provided, passed through.

Port	Type	What you get
Value	Scene node	The same value you stored, passed through.

Example

User input	the <code><Trainee01></code> user
Attribute Name input	<code>assignedStation</code>
Category input	<code>Training</code>
Value input	the <code><WeldingStation></code> object

Set User Attribute in Category (SceneState)

Saves a scene state into a category on a user as a named attribute.

What it does

Every user in your session can carry extra pieces of information called **attributes**, each one saved under a name you choose. Attributes can also be grouped into named **categories**, so a single user can keep separate attributes that share a name in different categories. This node attaches the attribute called the name you provide, inside the category you name, to the user you connect and stores a scene state in it. If that category already has an attribute with that name, its value is replaced; if not, the attribute is created.

The value you provide is also sent straight back out, so you can keep using it further along.

Inputs

Port	Type	What to connect
Execute	Trigger	Wire this from the previous node's Execute output.
User	User	The user you want to add or change the attribute on.

Port	Type	What to connect
Attribute Name	Text	The name to save the attribute under.
Category	Text	The name of the category to keep the attribute in.
Value	Scene state	The scene state to save a link to.

Outputs

Port	Type	What you get
Execute	Trigger	Fires once the node has finished.
User	User	The same user you connected, passed straight through so you can keep using it.
Attribute Name	Text	The attribute name you provided, passed through.
Category	Text	The category name you provided, passed through.
Value	Scene state	The same value you stored, passed through.

Example

User input	the <input type="text" value="<Trainee01>"/> user
Attribute Name input	<input type="text" value="checkpoint"/>
Category input	<input type="text" value="Training"/>
Value input	<input type="text" value="<Checkpoint2>"/>

Set User Attribute in Category (Sequence)

Saves a sequence into a category on a user as a named attribute.

What it does

Every user in your session can carry extra pieces of information called **attributes**, each one saved under a name you choose. Attributes can also be grouped into named **categories**, so a single user can keep separate attributes that share a name in different categories. This node attaches the attribute called the name you provide, inside the category you name, to the user you connect and stores a sequence in it. If that category already has an attribute with that name, its value is replaced; if not, the attribute is created.

The value you provide is also sent straight back out, so you can keep using it further along.

Inputs

Port	Type	What to connect
Execute	Trigger	Wire this from the previous node's Execute output.
User	User	The user you want to add or change the attribute on.
Attribute Name	Text	The name to save the attribute under.
Category	Text	The name of the category to keep the attribute in.
Value	Sequence	The sequence to save a link to.

Outputs

Port	Type	What you get
Execute	Trigger	Fires once the node has finished.
User	User	The same user you connected, passed straight through so you can keep using it.
Attribute Name	Text	The attribute name you provided, passed through.
Category	Text	The category name you provided, passed through.
Value	Sequence	The same value you stored, passed through.

Example

User input	the <Trainee01> user
Attribute Name input	introSequence
Category input	Training
Value input	<SafetyBriefing>

Check, list, or remove attributes in a category

User Has Attribute In Category

Checks whether a user has an attribute with a given name inside a category.

What it does

This node looks at the user you connect and tells you whether they already have an attribute saved under the name you provide inside the category you name. You get back **true** if they do and **false** if they do not. It only checks — nothing on the user is changed.

Inputs

Port	Type	What to connect
Execute	Trigger	Wire this from the previous node's Execute output.
User	User	The user you want to check.
Attribute Name	Text	The name of the attribute to look for.
Category	Text	The name of the category to look in.

Outputs

Port	Type	What you get
Execute	Trigger	Fires once the node has finished.

Port	Type	What you get
User	User	The same user you connected, passed straight through so you can keep using it.
Attribute Name	Text	The attribute name you provided, passed through.
Category	Text	The category name you provided, passed through.
Result	True / false	True if the attribute exists in that category, otherwise false .

Example

User input	the <input type="text" value="Trainee01"/> user
Attribute Name input	<input type="text" value="certified"/>
Category input	<input type="text" value="Training"/>
Result output	true — the attribute exists

Get User Attribute Category Names

Lists the names of the attributes kept inside a category on a user.

What it does

Attributes on a user can be grouped into named **categories**. This node looks at the user you connect and gives you back the names of the attributes that are stored inside the category you name. The names come back as a list of separate pieces of text, so you can connect a node that steps through a list to handle them one at a time. It only reads the user — nothing is changed.

Inputs

Port	Type	What to connect
Execute	Trigger	Wire this from the previous node's Execute output.
User	User	The user you want to look at.

Port	Type	What to connect
Category	Text	The name of the category whose attribute names you want.

Outputs

Port	Type	What you get
Execute	Trigger	Fires once the node has finished.
User	User	The same user you connected, passed straight through so you can keep using it.
Category	Text	The category name you provided, passed through.
Result	Text	The names of the attributes found in that category, returned as a list of separate pieces of text. Connect a node that steps through a list to read them one by one.

Example

User input	the <Trainee01> user
Category input	Training
Result output	a list of names — e.g. certified, score, assignedStation

Remove User Attribute From Category

Deletes a named attribute that is kept in a category on a user.

What it does

This node removes the attribute saved under the name you provide, inside the category you name, from the user you connect. That one attribute and its value are deleted from that category; everything else about the user stays the same.

If no attribute with that name exists in the category, nothing happens.

Inputs

Port	Type	What to connect
Execute	Trigger	Wire this from the previous node's Execute output.
User	User	The user you want to remove the attribute from.
Attribute Name	Text	The name of the attribute to remove.
Category	Text	The name of the category to remove it from.

Outputs

Port	Type	What you get
Execute	Trigger	Fires once the node has finished.
User	User	The same user you connected, passed straight through so you can keep using it.
Attribute Name	Text	The attribute name you provided, passed through.
Category	Text	The category name you provided, passed through.

Example

User input	the <input type="text" value="Trainee01"/> user
Attribute Name input	<input type="text" value="tempNote"/>
Category input	<input type="text" value="Training"/>

Revision #19

Created 28 August 2024 13:52:16

Updated 11 June 2026 08:19:44 by Rafat