

User Query

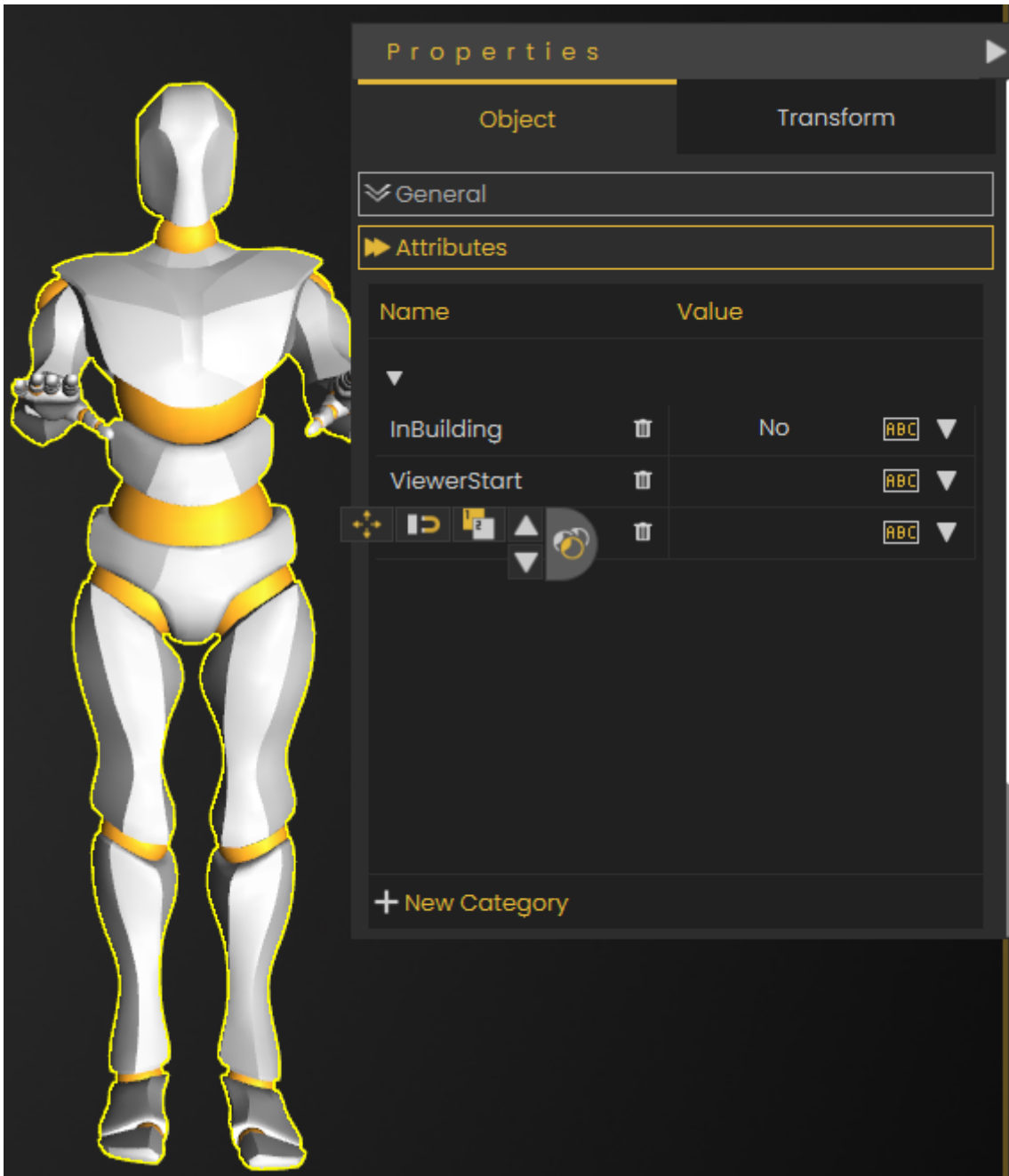
User Query



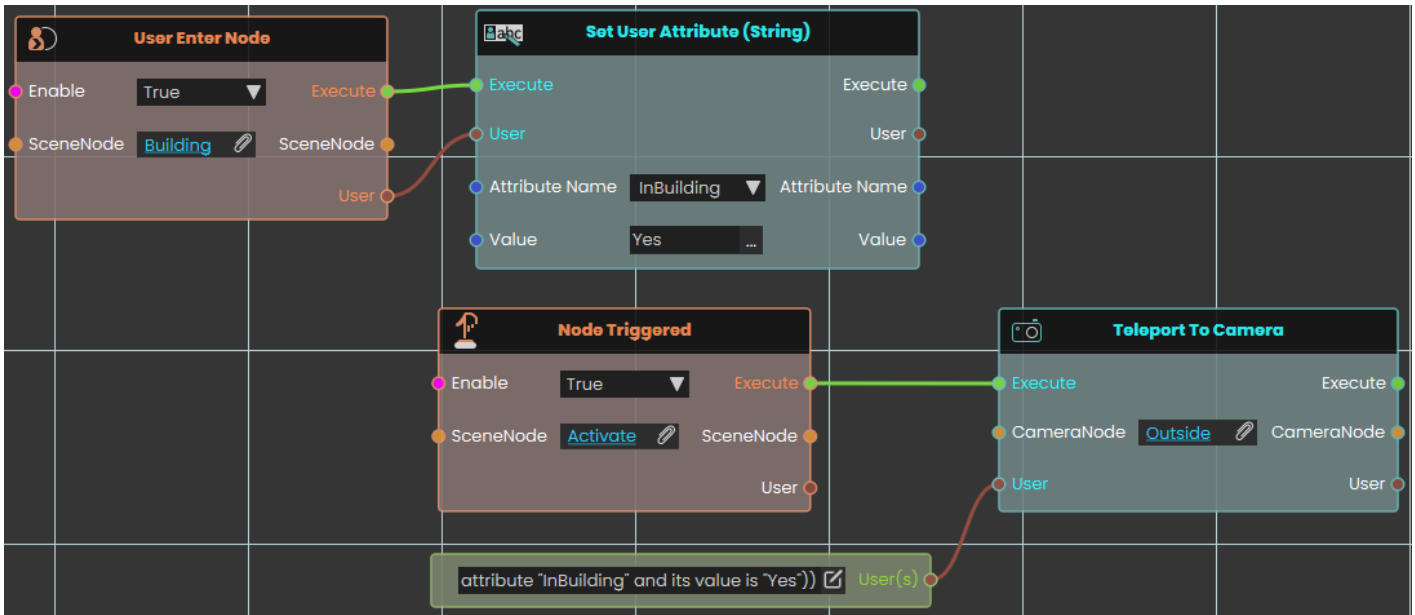
The **User Query node** enables the system to identify a user based on their attributes within the VR environment. This node enhances interactivity by allowing responses to be customized for individual users, triggering specific actions based on **user attributes** as part of their virtual experience.

Example

In this example, the **User Query node** is used to acquire specific attributes from specific users, in order to perform specific response to them



Once the User enters the object named **Building**, their InBuilding attribute's value becomes **Yes**, then when user triggers object named **Activate**, the users with attribute name **InBuilding** and its value is **Yes** gets teleported to CameraNode named **Outside**'s location.



Revision #1

Created 14 December 2025 12:53:24 by Samia Sabri

Updated 17 December 2025 13:35:35 by Samia Sabri