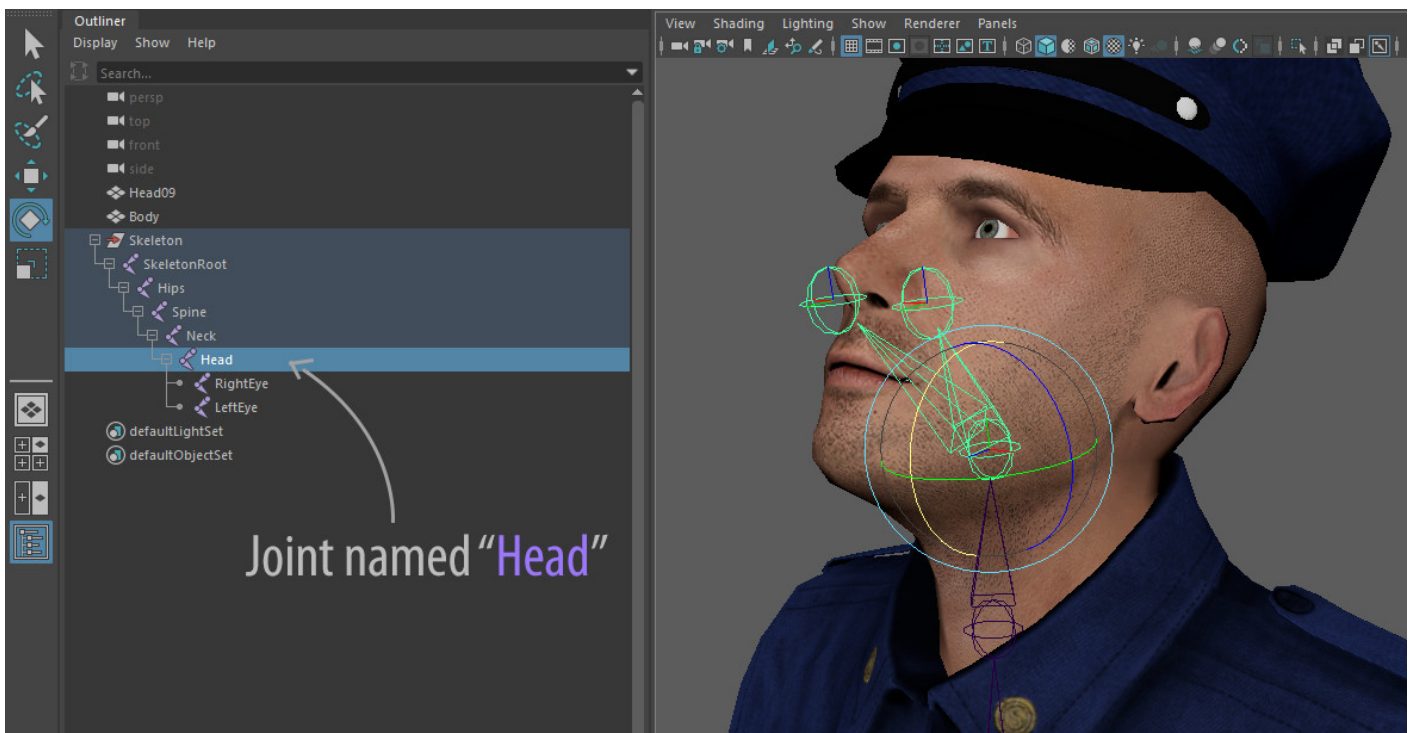


# Setting up your own Avatars and hands

## 3D Avatars

SimLab VR Viewer can use Avatar created from sources other than Ready Player Me, as long as they follow a certain simple criteria, which is as follows:

1- The Avatar Model must have a Joint named "Head" that controls the rotation of the Head if you want the Avatar's head to match movement of the user's head in VR, otherwise the Avatar will be Rigid during VR Collaboration Sessions.



2- The Avatar 3D model Must be facing the **Negative Y Axis** in SimLab Composer or SimLab VR Studio to have the correct orientation in SimLab VR Viewer.



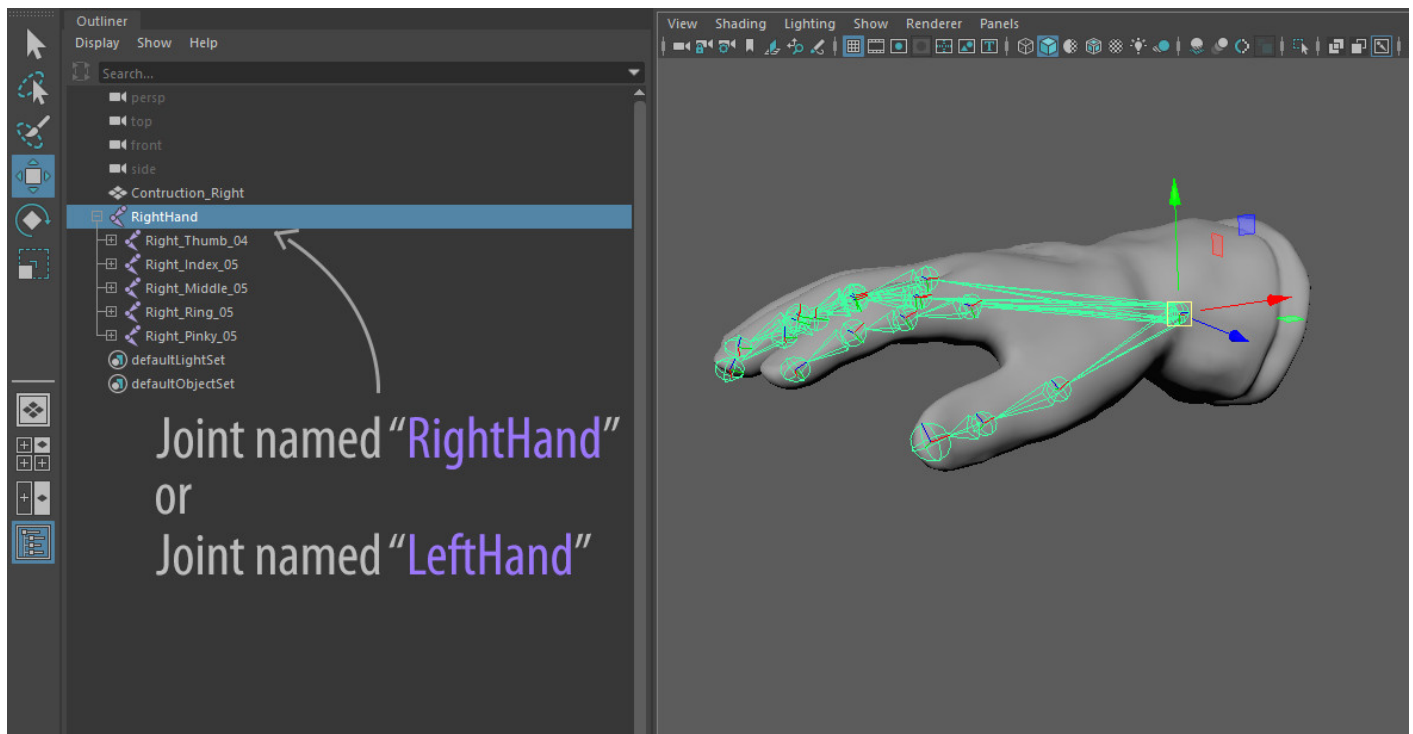
Once you have the 3D Avatar ready in SimLab Composer or VR Studio you can proceed with the same steps as exporting a "Ready Player Me" Avatar, **Export the model** by selecting export VR Catalog Item from the VR Viewer Menu, then go to the **Profile Settings in SimLab VR Viewer** and click the **Avatar Image**, then Select "**Add custom Avatar**" and select the VRPackage file you have exported earlier.

You can also use components that you have created as a part of the Avatar Generator.

## Dynamic Hands

In addition to Avatars you can also add custom created hands with animation for trigger and grabbing, to successfully add a dynamic hand to use in VR make sure of the following :

1- The hand needs to have a joint the controls it named "**RightHand**" for the right hand, and "**LeftHand**" for the left hand.



2- Both the Right hand and the left Hand need to be oriented in the Negative Y axis in SimLab Composer or SimLab VR Studio.



3-To Include a triggering and a grabbing animation with the hands, you need to have 4 Animations sequences for each hand:

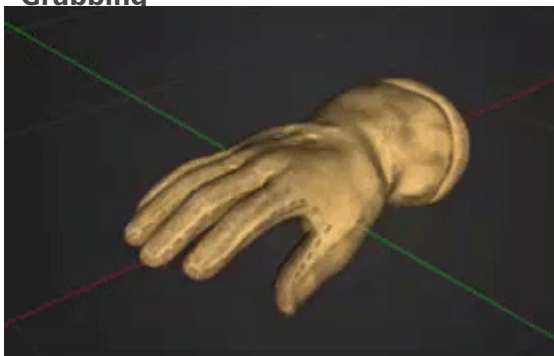
For the **Right Hand** : a grabbing Animation named "**R\_Grab**", a Releasing animation (reversed grabbing) named "**R\_Grab\_Reversed**", a Triggering Animation named "**R\_Trigger**" and a releasing animation named "**R\_Trigger\_Reversed**".

For the **Left Hand** : a grabbing Animation named "**L\_Grab**", a Releasing animation (reversed grabbing) named "**L\_Grab\_Reversed**", a Triggering Animation named "**L\_Trigger**" and a releasing animation named "**L\_Trigger\_Reversed**".

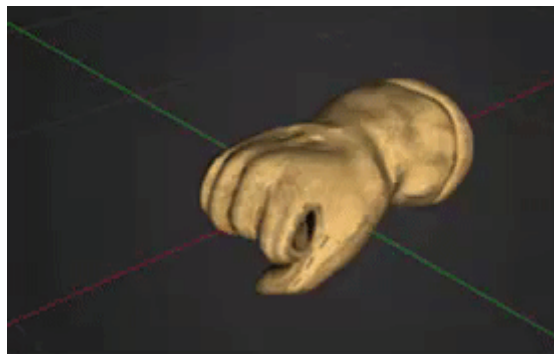
**Click Here** to learn more about animation sequences creation.



**Grabbing**

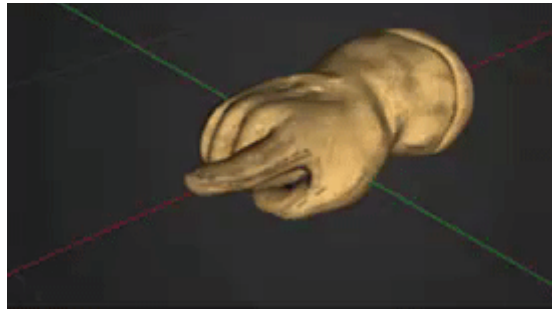


**Reversed Grabbing**



**Triggering**

**Reversed Triggering**



Once you have setup each hand separately, following the same steps as exporting a 3D avatar :

1. Export the Right or Left Hand by selecting **Export VR Catalog Item** from the VR Viewer Menu.
2. Click on the profile image at the top right corner in SimLab VR Viewer to access the **User Settings**.
3. Click the Right or Left Hand **Image** underneath the Avatar.
4. Click **Add Custom Hand** and select the VR Package you have exported.
5. Do the same for the Other hand.

---

Revision #10

Created 20 November 2022 05:52:44 by Khalid Abu Eid

Updated 17 January 2023 08:51:10 by Khalid Abu Eid